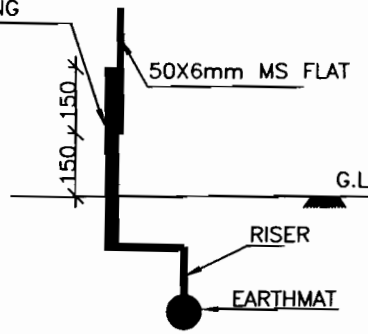
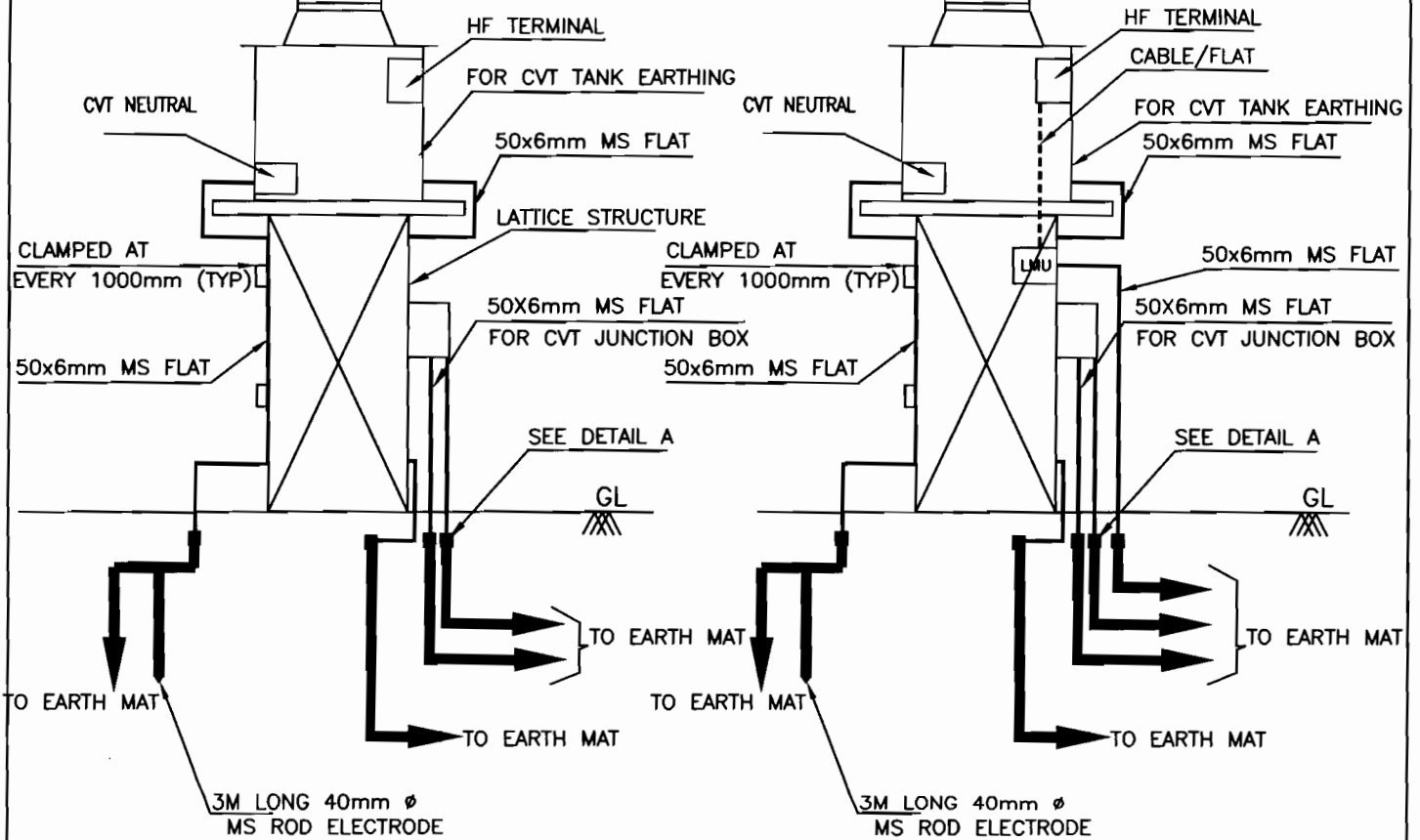


150 mm OVERLAP WELDING



DETAIL A



(CVT WITHOUT LINE MATCHING UNIT CONNECTION)

(CVT WITH LINE MATCHING UNIT CONNECTION)

NOTE:

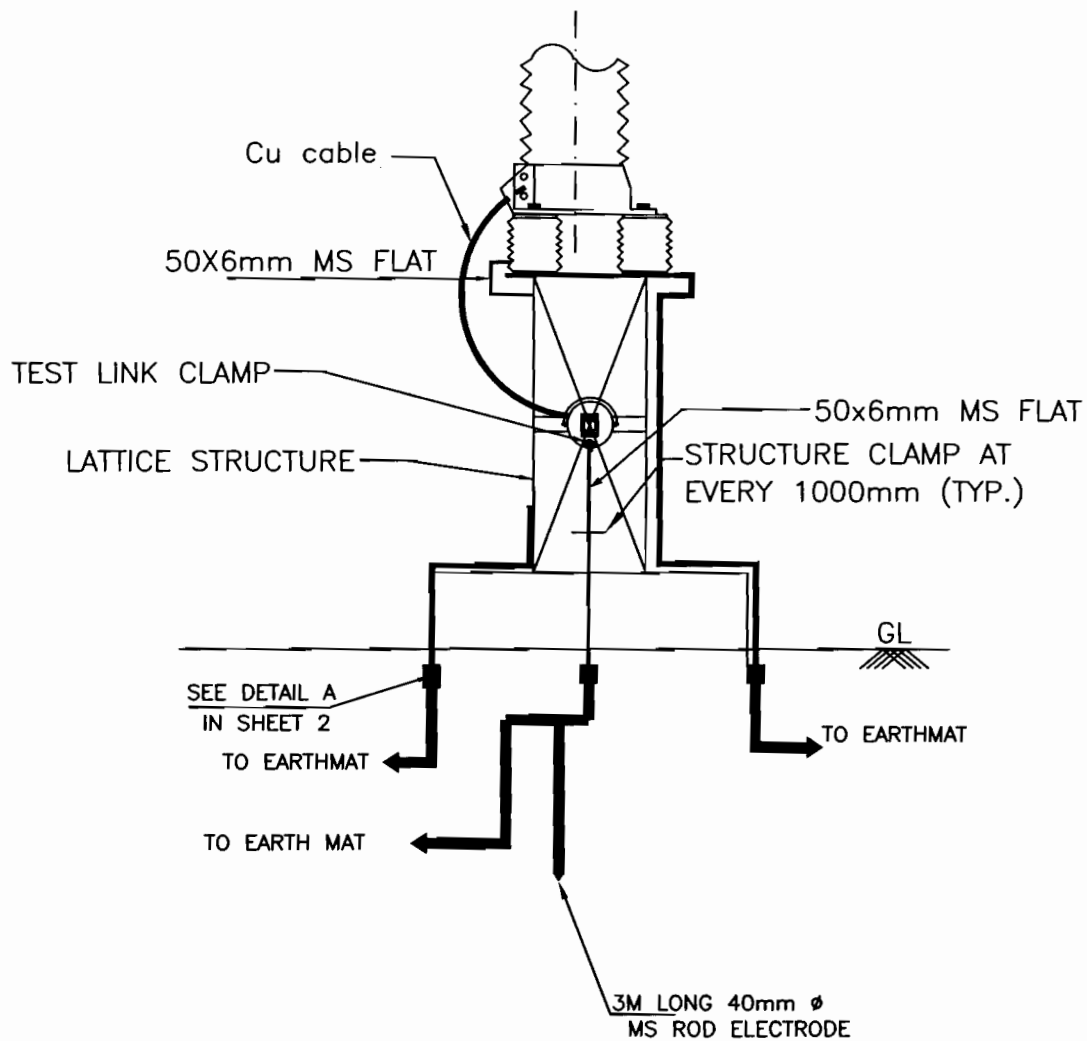
- (1) ROD ELECTRODE = 1 NOS./PHASE
- (2) NO. OF RISERS = 2 NOS PER PHASE FOR CVT WITHOUT LMU.
- (3) NO. OF RISERS = 3 NOS PER PHASE FOR CVT WITH LMU.
- (4) NO. OF RISERS FOR CVT JUNCTION BOX = 2 NOS.



EQUIPMENT EARTHING DETAILS

400KV CVT

*SVB*



NOTES;

1. LA SHALL BE EARTHED THROUGH EARTH TERMINAL OF SURGE COUNTER
2. NO. OF ROD ELECTRODE = 1 NO. PER PHASE
3. TEST LINK SHALL HAVE PROVISION TO BOLT TEST LEAD BEFORE ISOLATING THE MAIN EARTHING CONNECTIONS.
4. NO. OF RISERS= 3 NOS. PER PHASE



EQUIPMENT EARTHING DETAILS  
LIGHTNING ARRESTER(336kV)

*SVB*

COMPU. DRG. REF.

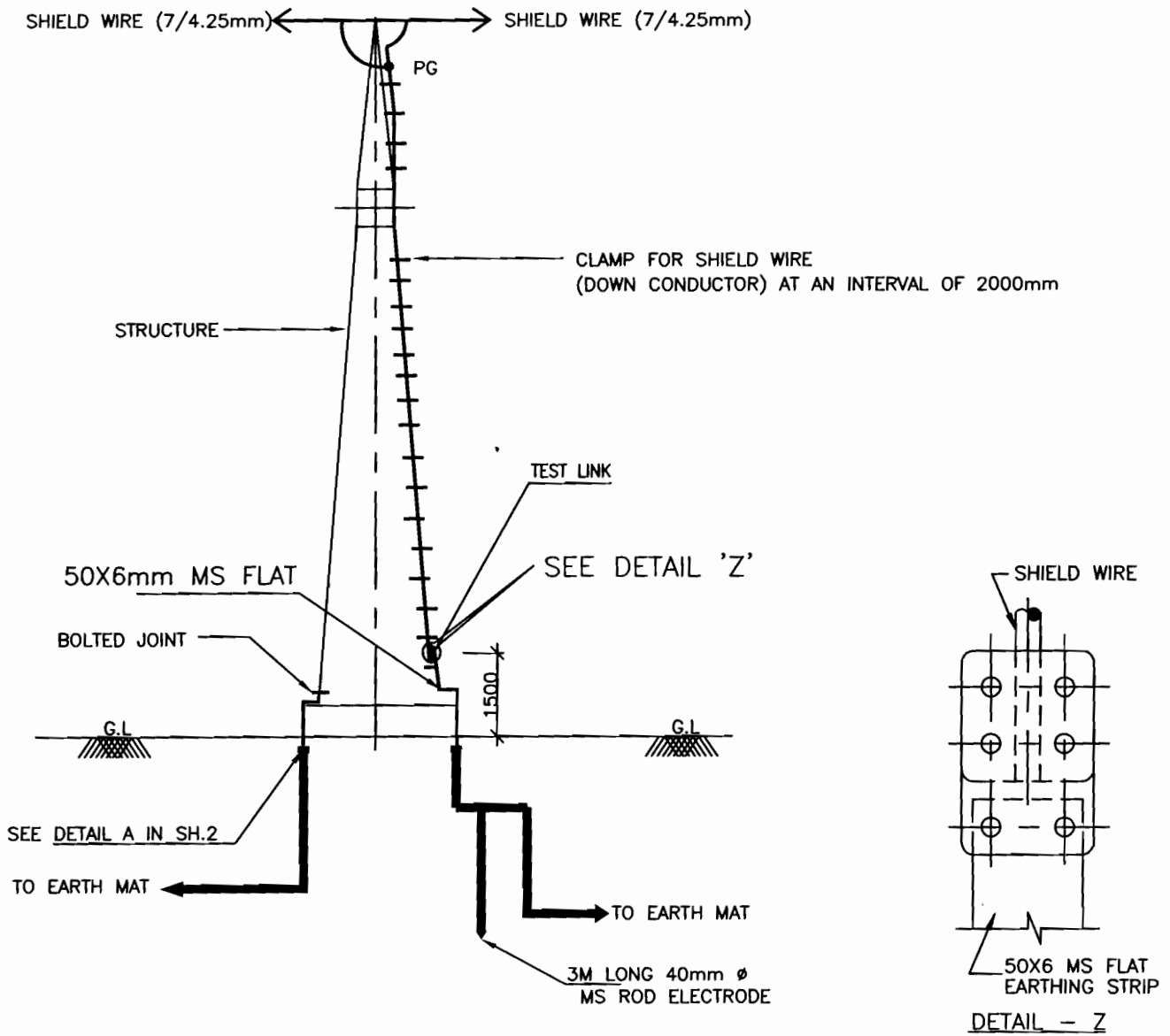
DRG.NO.

TB-4-319-316-003

REV. 00

SHEET No.

3



NOTE:

1. NO. OF ROD ELECTRODE : 1 NO. PER TOWER WITH DOWN CONDUCTOR.
2. NO. OF RISERS 2 NOS. / TOWER



EQUIPMENT EARTHING DETAILS  
TOWER WITH SHIELD WIRE

*cos*

COMPUTERREF.NO.

DRG. No.

TB-4-319-316-003

REV. 00

SHEET No.  
7